



180°



## 180°: TURNING LIVES AROUND

I am humbled everyday by the courage and persistence of the people we are serving through CenterPointe's pivotal treatment, rehabilitation, housing, and crisis response programs. Every day they are working to turn their lives around. They are overcoming homelessness, mental illness and addiction to become more productive members of our community. The Board is deeply committed to supporting them in their efforts. The Board's vision for CenterPointe focuses on helping the people we serve get better, sooner, for longer. We are an organization committed to deeper integration — that means finding new and better ways to help people be well. In my role as Board Chair, I know how passionately each member of the board feels about the work of CenterPointe. I know that you care about this work too. It is because of you that we are able to ensure pivotal treatment is available for homeless and low-income people in the community. Thank you for being a vital partner in recovery.

Sissy Ruley, *Board Chair*

## EVERYONE KNOWS SOMEONE...

In the last several years, CenterPointe has launched multiple new programs. This growth is driven by the needs of the people we serve and the needs of the community in addressing homelessness, mental illness and addiction. Lincoln is a great place to live precisely because we come together to help those who most need our help. Every day more than 500 people at CenterPointe are working to turn their lives around and fighting to find lasting stability and recovery. Every one of us knows someone who has struggled with mental or substance use issues. Mental illnesses are more common than cancer, diabetes and heart disease put together. Because people like you partner with CenterPointe, we not only provide pivotal treatment and programs, we are actively working to break down the stigma associated with mental health issues. Together we constantly push boundaries to find better ways in helping people to be well and in helping the community embrace these issues.

Topher Hansen, *President & CEO*

## 2013/2014 BOARD MEMBERS

Sissy Ruley, *Chair*

Scott Williamson, *Vice Chair*

Debra Patterson, *Exec. Member at Large*

Michael Shambaugh-Miller, *Exec. Member at Large*

Charles Bachmann

Carol Ernst

Tracy Graham

Julia Holmquist

Greg Jensen

Mike Khalili

Brad Korell

Lynn Morrissey

Kevin McManaman

Vicki Powell

Michelle Smith

Sam Smith

Tommy Taylor

## 180°: A COMPLETE TURNAROUND

Your support makes a difference. We hear from CenterPointe graduates, from friends and family members of CenterPointe program participants, and from staff members who share stories of success. People are gaining control of their lives every day. Here is just a sliver of one recovery story.

A CenterPointe Care Manager was visiting a client at the local detox facility. We have a close working relationship with this organization and many people in services at CenterPointe require repeat alcohol and drug detoxification services as they work to turn their lives around.

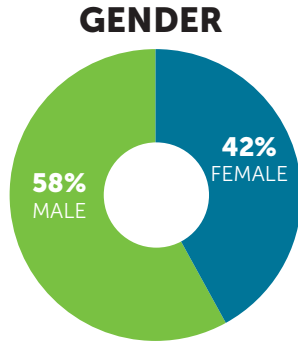
As the Care Manager turned a corner in the offices, she ran into someone she knew had been a long-time consumer at CenterPointe. Her first thought was concern that things were not going well for Lissa. She knew that Lissa had worked hard to stop drinking and had been doing well the last time she was in contact with CenterPointe.

Right away Lissa's face broke into a big smile. She was happy to see CenterPointe staff and declared, "I work here now. Isn't it great!" They had a brief conversation about her continuing journey of recovery and her hopes for the future.

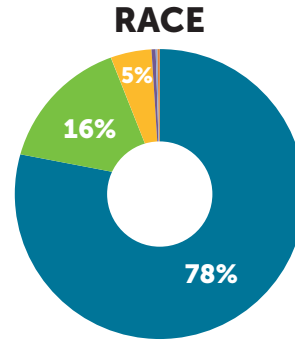
Because of you Lissa is sharing her hope and joy in recovery with others. She went from being a repeat visitor to detox to becoming a staff member there. Lissa has reconnected with her family, is managing her anxiety, and is building a strong support network. Despite her disability she is working regular hours and doing well.

Lissa's success would not be possible without your support. Because you care enough to support CenterPointe's pivotal treatment, Lissa and hundreds like her have turned their lives around. For more stories of recovery, see our website at: [www.CenterPointe.org](http://www.CenterPointe.org)

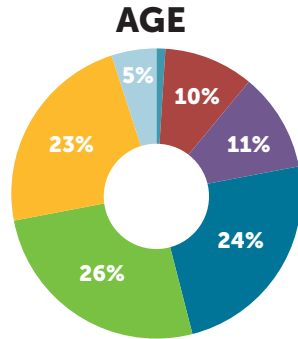
## DEMOGRAPHICS



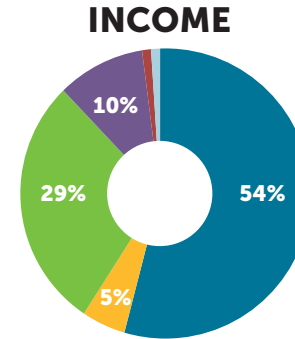
**INDIVIDUALS  
SERVED**  
1,384



- WHITE
- BLACK OR AFRICAN AMERICAN
- AMERICAN INDIAN
- ASIAN 1%
- NATIVE HAWAIIAN .1%
- OTHER PACIFIC ISLANDER .2%



**PROGRAM  
PARTICIPANTS**  
2,016



- \$1,000 OR LESS
- \$1,001 - \$5,000
- \$5,001 - \$11,670
- \$11,671 - \$20,000
- \$20,001 - \$30,000 1%
- \$30,001+ 1%

ONLY 12% ABOVE POVERTY LINE

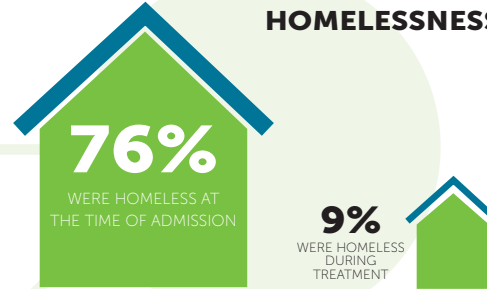
## OUTCOMES

CenterPointe meets people where they are and supports them to gain control of their lives. By treating the whole person, mental health and addiction can be addressed together in real-time.

### ACCESS TO MEDICATION



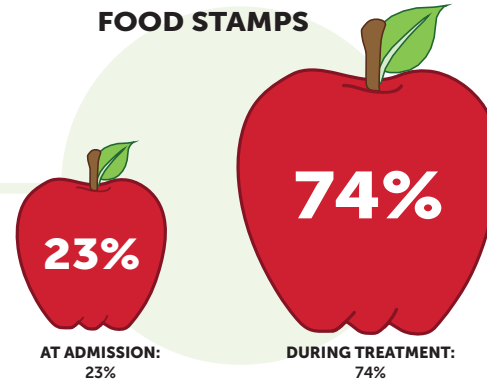
### HOMELESSNESS



### % OF INDIVIDUALS ACCESSING HIGH-COST SERVICES INCLUDING HOSPITALS, JAIL AND DETOX



### ACCESS TO FOOD STAMPS



For more than 40 years, CenterPointe has been pushing the boundaries to find better ways of helping people be well. Through your partnership, CenterPointe provides nearly 30 different programs in five key areas:

## **TREATMENT**

Both Outpatient and Residential treatment options are available with dually licensed therapists who treat mental illness and addiction together in real time. Medication Management to support mental stability.

## **REHABILITATION**

Structured day, residential, and home-based services to improve quality of life and support transition or stability in the community.

## **COMMUNITY SUPPORT**

Care management to access resources and develop independent living skills at every stage of recovery – from intensive to occasional, from young adulthood to elders.

## **HOUSING**

Transitional, supportive, and permanent housing for adults, transition-age young adults, veterans, and families living with mental illness or co-occurring mental illness and addiction.

## **CRISIS RESPONSE**

Trained therapists serving the whole community with a 24/7 hotline for suicide, mental health, or substance use crisis. Walk-in crisis services and support of Lincoln Police Dept. for mental health crisis in the community.

## **OTHER PROGRAMS**

Artists and Writers on the Edge: Creative expression for the whole community.

SOAR: Technical assistance with SSI/SSDI applications.

## CENTERPOINTE LEGACY CIRCLE: ENDOWING THE FUTURE



When you create an estate gift for CenterPointe, you are building a legacy of caring for people suffering from mental and substance use disorders. CenterPointe's Board of Directors is committed to investing estate gifts in the endowment fund to secure financial stability for years to come.

Estate gifts can be made in a variety of ways. Some examples include donation of life insurance, designation of retirement accounts, or through recognition in a will. We encourage you to talk with your estate planning professional about the option that works best for you.

The Legacy Circle recognizes donors who've included a gift in their estate plans. Vicki Powell is a charter member of the CenterPointe Legacy Circle:

"I think it's important to plan. I hope more people will make a designation for CenterPointe in their estate plans. I've included CenterPointe in my will because I really care about access to treatment. We must ensure these pivotal services are available for those who come after us."

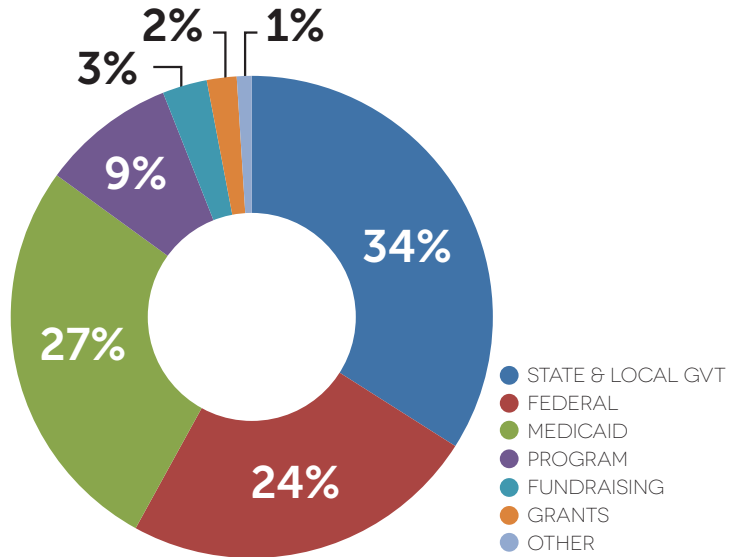
*For sample language about including CenterPointe in your estate plans, or to share your existing plans with us, please contact Abbigail Swatsworth at 402.475.8717 or [aswatsworth@centerpointe.org](mailto:aswatsworth@centerpointe.org).*



## FINANCIAL STATEMENT

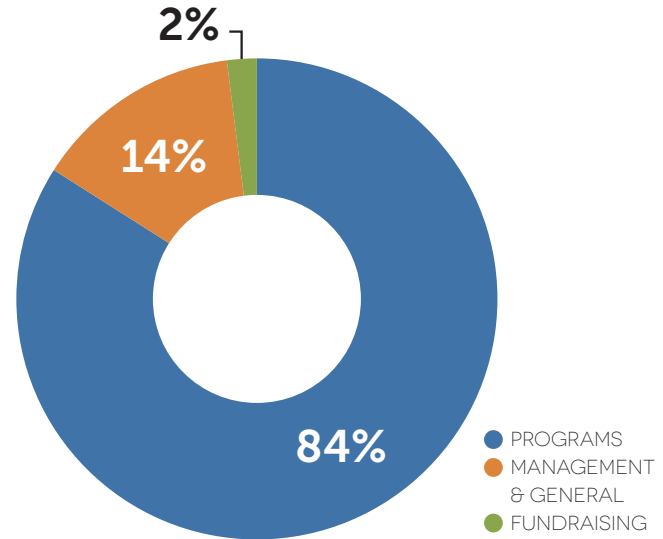
### TOTAL REVENUE

\$6,973,270



### TOTAL EXPENSES

\$7,138,416



# CENTERPOINTE HELPS THE PEOPLE WE SERVE GET BETTER, SOONER, FOR LONGER.

Administrative Offices: 2633 P St . Lincoln NE 68503

P: 402.475.8717

[development@centerpointe.org](mailto:development@centerpointe.org)

[CenterPointe.org](http://CenterPointe.org)

